

# 27" HD Touchscreen Medical Display

## FS-A2702DT, FS-A2702DST



FS-A2702DT and FS-A2702DST (with SDI) are projected capacitive multi-touch screens that are designed for medical applications including endoscopy, fluoroscopy, and ultrasound. These models offer precise data and image control for clinicians. They feature a high brightness LED back light and rich color calibration set to Rec. 709 (sRGB gamut) for HD medical grade image consistency. FSN's complete set of monitor features is designed specifically for presenting images from surgical endoscopic camera systems or other medical imaging devices.

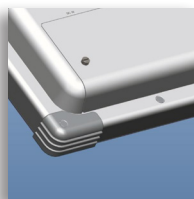


### User Friendly

These monitors incorporate an intuitive, full- featured on screen menu for image and layout settings. Multi-modality options let doctors view PIP, PBP, triple, or quad images at the same time. The lightweight



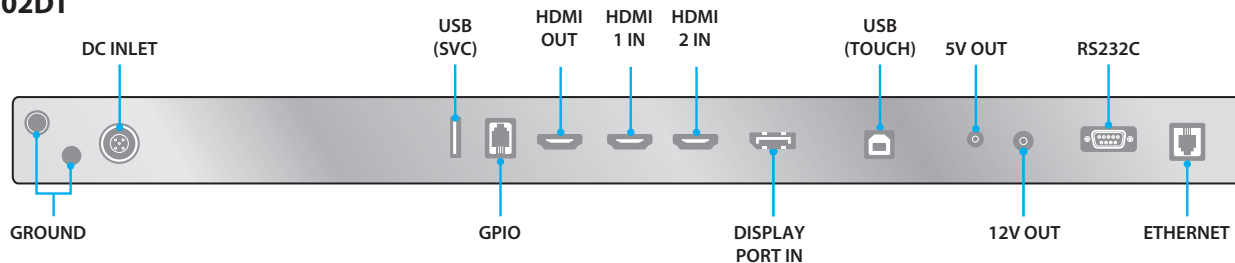
design is ideal for boom or spring-arm mounting, and the convenient back cable cover helps organize and manage multiple cords.



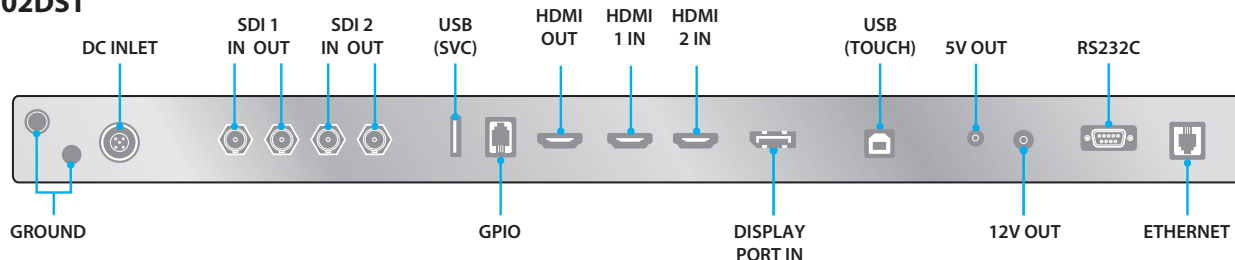
### Designed for the OR

The unique exterior is comprised of a slim and sleek housing design with built in rounded corner bumpers for added safety. Edge-to-edge front glass allows for fast disinfection and quick surgery room turnaround. Ingress protection rating of 33 helps protect internal components against solid or liquid contamination. The monitor's back cover offers input/output port protection and clean cable management.

### FS-A2702DT



### FS-A2702DST



# 27" HD Medical Display

## FS-A2702DT, FS-A2702DST

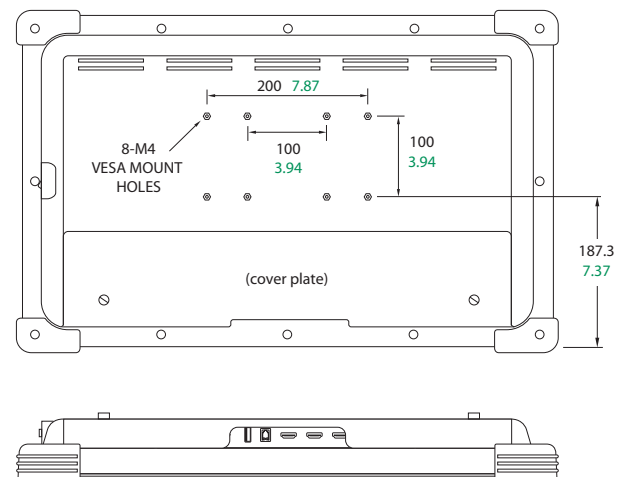
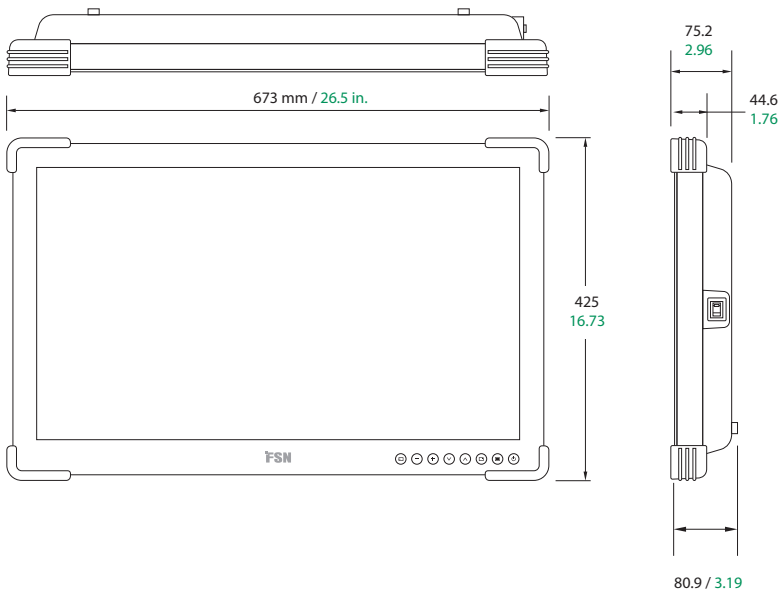


## Specifications

### General Features

Item	Description
Panel	27 inch TFT LCD (LED)
Resolution	1920 x 1080 pixel
Aspect Ratio	16 : 9
Active Area	597.89 (H)mm x 336.31 (V)mm
Touchscreen	10 point projected capacitive USB (2.0)
Pixel Pitch (mm)	0.3114 x 0.3114
Response Time (typical)	14 ms (gray to gray)
Number of Colors	16.7 million
Brightness (typical)	700 cd/m <sup>2</sup>
Gamut	BT.709 compatible
Contrast Ratio (typical)	1000 : 1
Surface Treatment	Anti-reflection, anti-fingerprint
Viewing Angle (CR>10)	R/L 178°, U/D 178°
Input Signal	FS-A2702DT 2 x HDMI (1.4) 1 x DP (1.2)
	FS-A2702DST 2 x HDMI (1.4) 1 x DP (1.2) 2 x SDI (3G. HD, SD)

Item	Description
Output Signal	FS-A2702DT 1 x HDMI (1.4)
	FS-A2702DST 1 x HDMI (1.4) 2 x SDI (3G. HD, SD)
Power Supply	AC/DC Adaptor (AC 100~240V, DC 24V/6.6A)
Power Consumption	120W
Latency (typical)	2 ms max
Accessories Included	User manual, AC-DC adaptor, AC power cord, HDMI cable, USB cable, SDI cable (FS-A2702DST), Screw BH M4 x 14
Unit Dimension	673(W) x 425(H) x 75.2(D) mm 26.49(W) x 16.73(H) x 2.96(D) inch
Package Dimension	755.65(W) x 654.05(H) x 234.95(D) mm 29.75(W) x 25.75(H) x 9.25(D) inch
IP Rating	IP33 - overall
Weight	FS-A2702DT 8.52 kg, 18.78 lbs. (monitor with cover) 13 kg, 28.66 lbs. (shipping package)
	FS-A2702DST 8.67 kg, 19.11 lbs. (monitor with cover) 13.3 kg, 29.32 lbs. (shipping package)
Certifications	ANSI/AAMI ES60601-1 (UL60601-1), CAN/CSA C22.2 No. 60601-1, FCC Class B, EN60601-1, EN60601-1-2, CE, MDR(EU) 2017/745 Class I Medical Device



FSN Medical Technologies products meet EU RoHS Directive 2011/65/EU+2015/863/EU and Registration, Evaluation, Authorisation and Restriction of Chemicals (REACH) obligations. FSN manages the information flow as required by regulations.

[fsnmed.com](http://fsnmed.com)

Specifications are subject to change with or without notice. Doc. # FSN2083 Rev. 2/24

#### Foreseeson Custom Displays, Inc.

2210 E. Winston Road  
Anaheim, CA 92806 USA  
Tel: 714-300-0540  
Fax: 714-300-0546

Latin America  
Aventura, FL 33180 USA  
Tel: 714-507-3855

#### Foreseeson Korea

B-408, U-Space2  
670 Daewangpangyo-ro,  
Bundang-gu, Seongnam-si  
Gyeonggi-do, Republic of Korea  
Tel: +82-31-8017-0780

#### Foreseeson GmbH

Industriestrasse 38a  
63150 Heusenstamm, Germany  
Tel: +49 6104 64398 0  
Fax: +49 6104 64398 11

#### Foreseeson UK Ltd.

1 Wolsey Road  
East Molesay  
Surrey  
KT8 9EL  
United Kingdom  
Tel: +44 (0) 208 546 1047

#### Foreseeson (Shanghai) Medical Equipment Co., Ltd.

Room 8E, No. 89 Building  
1122 North Qinzhou Road  
Xuhui, Shanghai 200233, China  
Tel: 18521095596